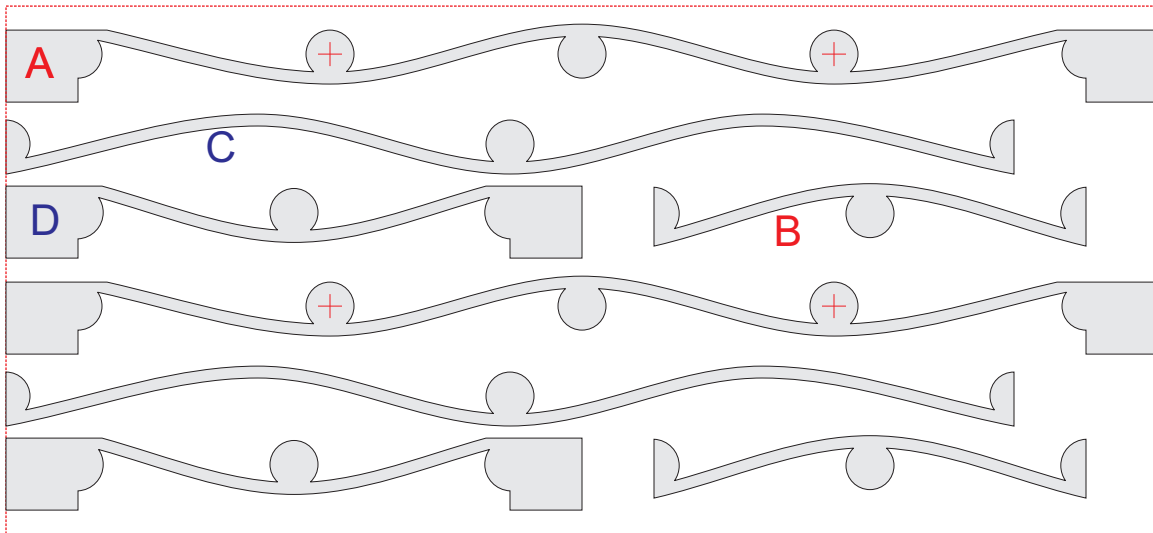


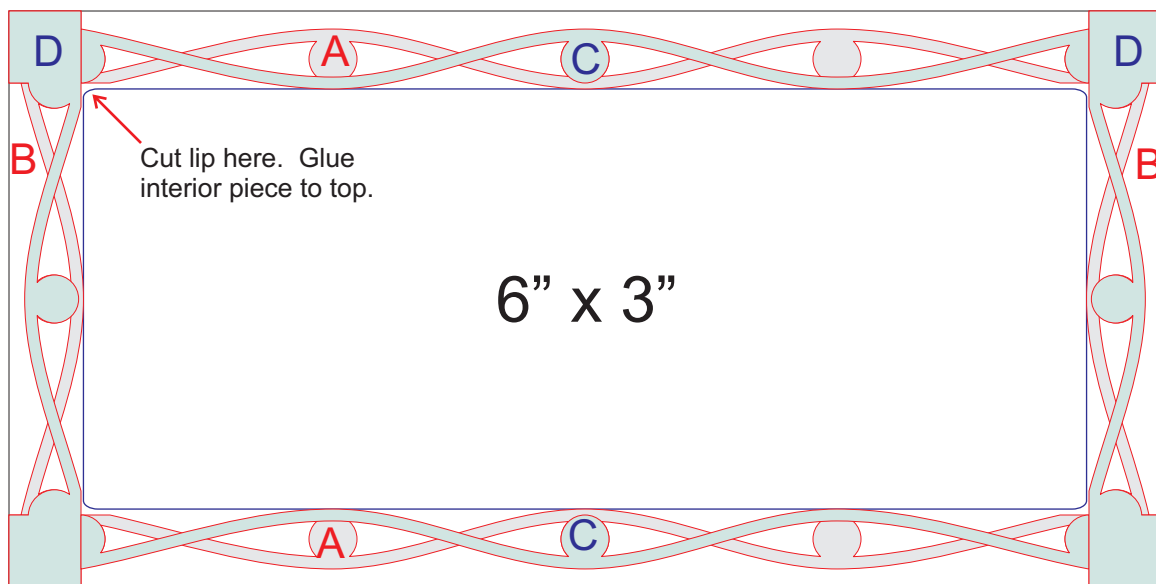
# The Evealle

## Beaded Woven Box

Ver 1.0.3-080616



Three layers of 6"x 2-3/4" x 1/4". Note there are two copies of each piece in the pattern. They may also be cut apart to better fit scrap wood.



Use two layers of 6" x 3" x 1/8" hardwood for top; one for lip and insert, other for lid. Cut along the inside blue line for the lip; the interior piece is glued to the top.

Use one layer of 6" x 3" x 1/4" hardwood for the bottom.

The first layer uses the red letter parts, 'A' and 'B'. The second layer used the blue letter parts, 'C' and 'D'. Continue upward, alternating layers, until you have 5 or 6 layers.

After finishing the layers, but before you glue on the lip, sand the edges of the corner pieces flat and apply an oil finish to the assembly and the lip/top. Thread findings and beads through the holes in the 'A' parts. Next glue the lip to the top of the layer assembly.